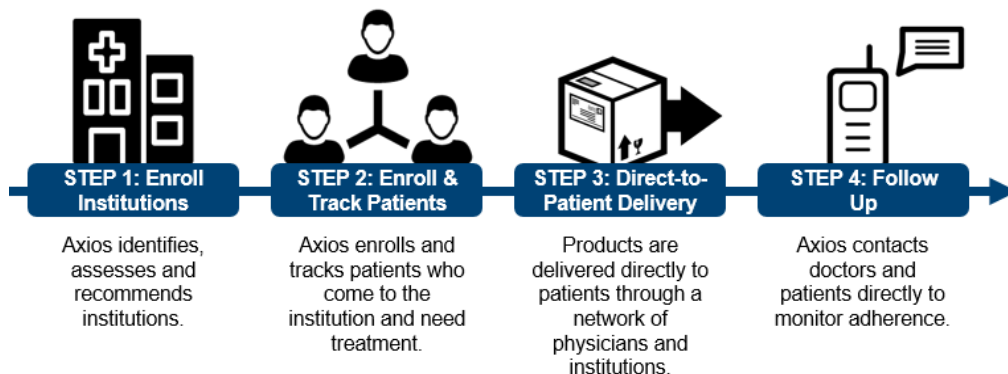


Our Approach to Supply Chain Management

Partnering With Institutions to Enable Direct-to-Patient Delivery

Axios believes that reliable, effective and consistent supply chain management systems (SCMS) are a key component of a well-functioning healthcare system. As part of our mission to make healthcare accessible to patients around the world, Axios has developed a patient-focused approach to supply chain management to overcome the challenges associated with SCMS in low-to-middle income countries.

Axios works closely with partner organizations and institutions on-the-ground to coordinate delivery according to patient needs – ensuring that institutional stock requirements and patient requirements are aligned and based on real-time information:



Axios' approach to Supply Chain Management is able to overcome challenges associated with accurate forecasting, reliable delivery and patient adherence by:

- **Building relationships with key stakeholders:** Our relationships with hospital directors and physicians that have a direct line-of-sight on patient needs allow us to more accurately forecast commodity needs.
- **Designing integrated systems:** By coordinating supply chain systems around specific institutions rather than specific products or disease areas, Axios' supply chain management systems can support multiple donors, products and health programs.
- **Capturing real-time data:** Through evidence-based tools and close coordination with institutions, Axios' approach is centered on the gathering of accurate, real-time data.
- **Monitoring adherence:** Direct contact with physicians and patients enables us to closely monitor and proactively identify challenges to increase adherence to treatment.

Axios' patient-focused supply chain management approach has been used effectively in more than 100 countries, benefitting more than 8 million patients and counting.



Pharmacy in Addis Ababa, Ethiopia dispensing medication to patient.